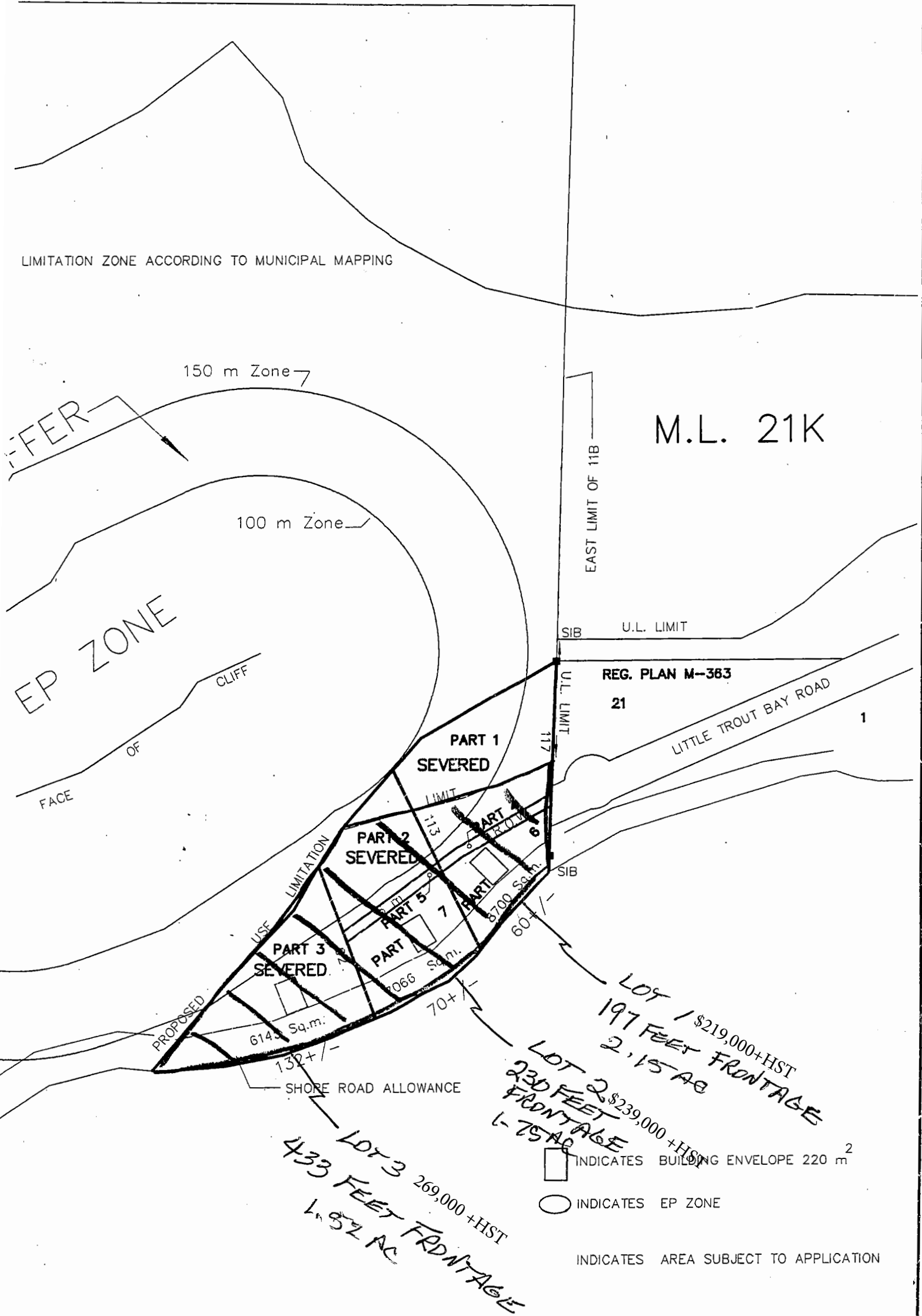


SUBJECT TO CONSENT APPLICATION "A"

LIMITATION ZONE ACCORDING TO MUNICIPAL MAPPING



EAST LIMIT OF 11B

M.L. 21K

U.L. LIMIT

REG. PLAN M-383

21

LITTLE TROUT BAY ROAD

PART 1 SEVERED

PART 2 SEVERED

PART 3 SEVERED

PART 4 SEVERED

PART 5 SEVERED

PART 6 SEVERED

SIB

U.L. LIMIT

U.L. LIMIT

SIB

SIB

SIB

SIB

SIB

SIB

SIB

SIB

150 m Zone

100 m Zone

CLIFF

EP ZONE

FACE OF

PROPOSED

6143 Sq.m.

SHORE ROAD ALLOWANCE

LOT 3 269,000+HST  
433 FEET FRONTAGE  
1.52 AC


LOT 2 \$239,000+HST  
230 FEET FRONTAGE  
1.75 AC

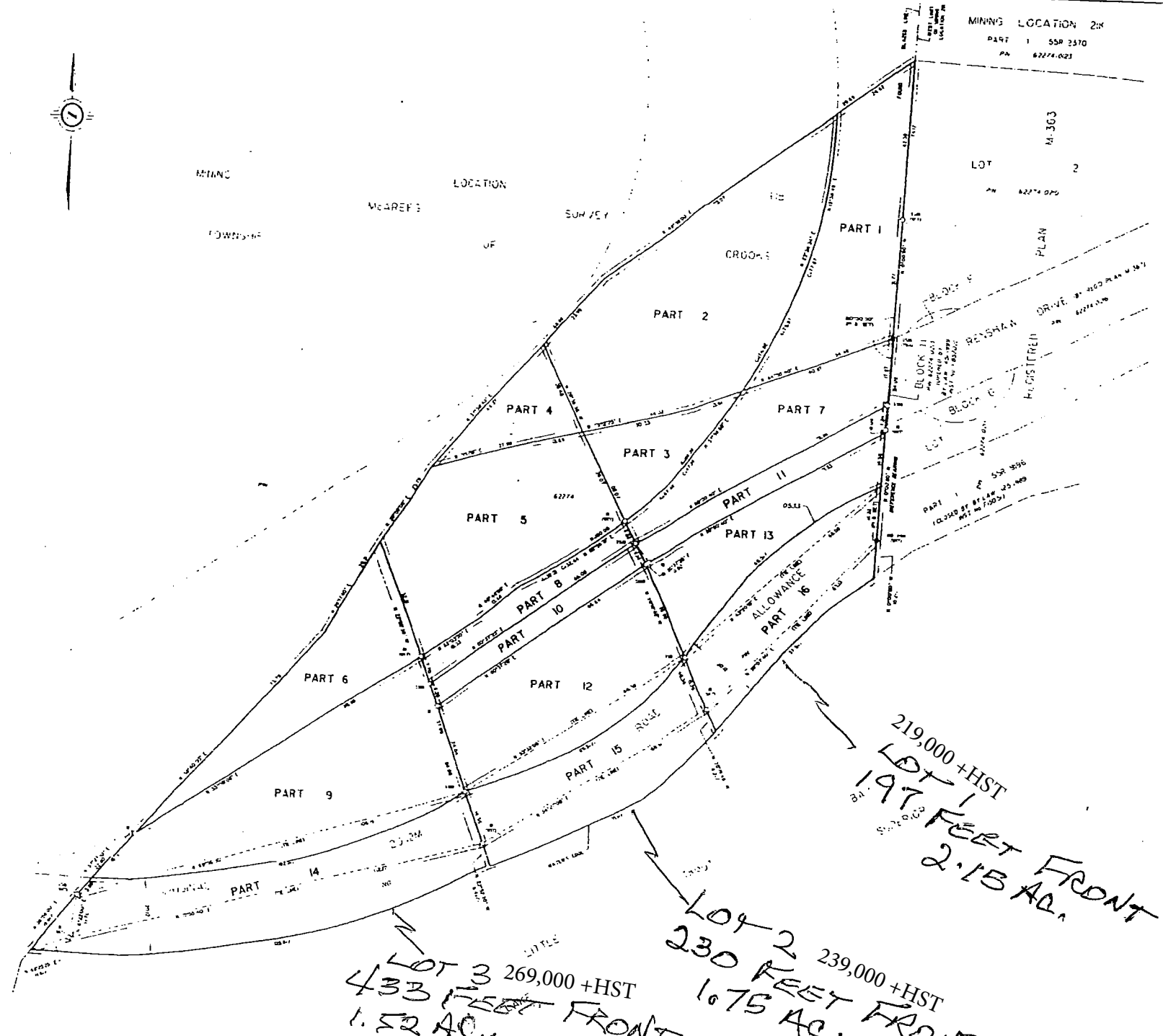
LOT 1 \$219,000+HST  
197 FEET FRONTAGE  
2.15 AC

INDICATES BUILDING ENVELOPE 220 m

INDICATES EP ZONE

INDICATES AREA SUBJECT TO APPLICATION

 <p><b>J.D. BARNES</b> LIMITED SURVEYING MAPPING GIS</p> <p>MARKED BY INNOVATION • HEADLINED BY REPUTATION™</p> <p>1881 WILLIAM STREET, SUITE 11 T: (907) 622-6277 F: (907)</p>	<p>WP DRAWN</p>
	<p>WEP CHECKED</p>
	<p>DATE: 11/01/08</p>



LOT 3 269,000 +HST  
433 FEET FRONT  
1.52 AC.

LOT 2 239,000 +HST  
230 FEET FRONT  
1.75 AC.

LOT 1 219,000 +HST  
197 FEET FRONT  
2.15 AC.

MINING LOCATION 218  
PART 1 55P 2570  
PA 62774-023

PLAN 55R-12762  
RECEIVED AND DEPOSITED

DATE NOVEMBER 3, 2006  
DATE 2006-11-04

W.D. BARNES  
LAND REGISTRAR FOR THE  
DISTRICT OF THUNDER BAY

PART	LOT	PLAN/COM	AREA
1			865.46 m <sup>2</sup>
2			327.46 m <sup>2</sup>
3			393.46 m <sup>2</sup>
4			33.46 m <sup>2</sup>
5			274.46 m <sup>2</sup>
6			128.46 m <sup>2</sup>
7			344.46 m <sup>2</sup>
8			2542.46 m <sup>2</sup>
9			399.46 m <sup>2</sup>
10			345.46 m <sup>2</sup>
11			322.46 m <sup>2</sup>
12			104.46 m <sup>2</sup>
13			2276.46 m <sup>2</sup>
14			1206.46 m <sup>2</sup>
15			873.46 m <sup>2</sup>

PLAN OF SURVEY OF  
PART OF MINING LOCATION 118  
McAREE'S SURVEY  
AND 20.17 ROAD ALLOWANCE  
IN FRONT OF MINING LOCATION 118  
GEOGRAPHIC TOWNSHIP OF CROOKS  
NOW IN THE  
MUNICIPALITY OF NEEBING  
DISTRICT OF THUNDER BAY  
SCALE 1:500  
J. D. BARNES LIMITED

METRIC DISTANCES SHOWN ON THIS PLAN ARE IN METRES AND CAN BE CONVERTED TO FEET BY DIVIDING BY 0.3048

NOTES

BEARINGS ARE ASTROLOGICAL AND ARE REFERRED TO A PORTION OF THE SOUTHERLY LIMIT OF REGISTRATION PLAN 55R-12762, BEARING OF 89°00'00" W.

1. BEARING: 89°00'00" W  
2. DISTANCE: 100.00 M  
3. BEARING: 89°00'00" W  
4. DISTANCE: 100.00 M  
5. BEARING: 89°00'00" W  
6. DISTANCE: 100.00 M  
7. BEARING: 89°00'00" W  
8. DISTANCE: 100.00 M  
9. BEARING: 89°00'00" W  
10. DISTANCE: 100.00 M  
11. BEARING: 89°00'00" W  
12. DISTANCE: 100.00 M  
13. BEARING: 89°00'00" W  
14. DISTANCE: 100.00 M  
15. BEARING: 89°00'00" W  
16. DISTANCE: 100.00 M

SURVEYOR'S CERTIFICATE

I, J. D. BARNES, being a duly qualified and licensed Surveyor, do hereby certify that the above is a true and correct copy of the original plan and the original plan was shown to me and the same was completed on the 10th day of October 2006.

DATE 2006-10-24

**J.D. BARNES** SURVEYING  
LAND INFORMATION SPECIALISTS  
100 MILLIKEN STREET SUITE 101, THUNDER BAY ONT. M9B 1S1  
1-800-461-1111

Drawn by: K.J. Checked by: W.E.P. Approved by: W.E.P.  
Date: 08-12-06-00

SCHEDULE "A"